

The Scoop

Volume: 13 Issue: III Date: March, 2023

ASBURY
BETHANY
VILLAGE



Anticipate More

From the Executive Director...

Brian Grundusky



Hello to all the BV Residents, Associates and Family members. I wanted to take some time and share with you my feelings and gratitude for all the associates that provide their services to our residents at BV. Before I start, I would like to go back 27 years from when I was hired at Bethany Village. I am not sure that everyone knows but my mother was a nurse at Bethany. She worked in all areas which included Skilled Nursing, Assisted Living and Residential Living (for over 20 years). She was the most influential person in my life and not only guided me but provided me with my first opportunity to work with our senior living population. I was hired as a part time groundskeeper when I was going to Shippensburg University for my undergraduate degree. When I first started, I was able to have several interactions with associates and it was clear from the beginning that all of us had one thing in common. That was to ensure we took care of those that we served. It truly felt like a mission and that we were all here to ensure that we took care of our elders. I knew, at this point, that Bethany was the place I wanted to be.

Over the last several years, I have been afforded several opportunities to grow within my career and able to learn from so many other great associates. It has truly been a blessing and without the associates taking their time to teach me, I would never have been able to

get where I am today. One person that comes to mind was a resident/volunteer named Ken Thomas. Ken lived in the East Cottages and volunteered in the Grounds department. He would work Monday-Friday from 8:00 a.m. - 5:00 p.m. His only duty was to ride the John Deer mower and cut the grass. He was so dedicated and meticulous when it came to his job, and he was a resident/volunteer!! I learned so much from Ken and he was another inspirational role model for me in my career.

Even though our residents have been wonderful and are the priority for us, I feel that we also need to take the time to recognize our associates. Without the associates, we would not be able to operate. I do realize that it has

(Continued on page 2)

In This Issue

From the Chaplain	3
PARCR	4
Volunteer	5
Intro to AI	6
Asbury Foundation	7
Bethany Readers	8
Additions to the Library	9
Great Courses	10
Food for Thought	11
A Garden Walk	12
BV Auxiliary	13
Ambulance Membership	14
Birthdays	15
Peoples Bank	17
Venture Series	18
Bereavements	19
Welcome New Residents	19

Bethany Village
325 Wesley Drive
Mechanicsburg, Pa 17055

(Continued from page 1)

been a very challenging time over the last several years and I have been blown away at the amount of work and effort our associates have put in to ensure that our residents are being taken care of. We have made it through a pandemic, and this could not have been possible without all of us working and coming together as a community.

Thank you to all the associates who I have and had the honor to work with over the years. I have always stated that it takes a special person to do what we do and know deep in my heart that we will continue to provide great service and lifetime experiences for all that we serve!!



Bethany Village Retirement Center

H&R Block will return to Bethany Village on March 7th. Due to the ongoing repairs on the West Campus, Mr. Parish and associates will only be on the East Campus on Tuesday March 7th, from 9 am till 3 pm near the Bistro. If you have your tax documents ready, you can bring them with you then. Or just stop by the Resident Life office with your documents at any time. Come see us and set your appointment or call the number below.



3401 HARTZDALE DR, STE 118, CAMP HILL, PA 17011
717-761-5602

PARCR Meets LeadingAge PA!

Lowell Stirling

PARCR's April Quarterly Meeting will be at Londonderry Village in Palmyra on April 12, 2023, at 10:00am. The keynote speaker will be Garry Pezzano, the CEO of LeadingAge PA. He will discuss his plans for LeadingAge PA as well as the legislative climate in Harrisburg for issues affecting CCRCs. If you are not familiar with LeadingAge PA, they are a trade association representing more than 380 quality senior housing, health care, and community services across the commonwealth like Bethany Village. These providers serve more than 75,000 older Pennsylvanians. LeadingAge PA provides education, advocacy, and work force growth support to its members.



Pennsylvania Alliance of Retirement Community Residents

You do not have to be a PARCR member to attend the in-person meetings. The invitation letter will be in your mailboxes a couple of weeks before the meeting.

As always, PARCR individual memberships are \$20 a year and you can find the registration materials at PARCR.ORG.

Official Websites:

PARCR – PARCR.ORG

(Pennsylvania Alliance of Retirement Community Residents)

LeadingAge PA – leadingagepa.org

NaCCRA – naccra.com (National Continuing Care Residents Association)

This cold, miserable winter are you going through withdrawal from not being able to watch model train layouts run?



Yes, the Garden Train is in storage for a long winter's nap, and the Christmas Train had to be taken down early because of the water pipe problem. We do still have the N scale layout running in the East Breezeway. However, there is a cure for your withdrawal issues: Visit the Bethany Village Model Railroad Club's website at <https://bvmrrc.bvrescoun.org/> where you can watch those trains and more run to your heart's content. The best part is you don't have to go out in the cold to see them, or even leave your chair.

The Christmas Train has multiple buildings and pieces of scenery to see. In addition, multiple moving accessories including an ice hockey rink, a swan pond, and a figure skating pond bring the village to life.

Lowell Stirling



**Are your Bored,
tired of sitting at home,
want to get out and utilize your life skills?
How about Volunteering?**

The United Way of Central Pa has a web site: www.uwcp.org/volunteer, offering 29 different positions that not-for-profit agencies are looking to fill.

- UPMC on the East Shore, West Shore and Carlisle etc.
- Capital Area Therapeutic Riding Association
- America Red Cross – Blood Drives, Emergencies
- Salvation Army in Harrisburg – Morning Breakfast Program
- Jewish Family Services - Meal on Wheels
- Tri-County Community Action - Gardner's
- Contact Information & Referral
- Wildwood Park Nature Center
- Vision Resources – Radio Reading Program

Plus other agencies who need Volunteers:

- Downtown Daily Bread
- Mission Central in Mechanicsburg
- Simpson Library
- New Hope



ATTENTION COTTAGE AND APARTMENT RESIDENTS

Do you like to help others?

Have you lived at Bethany Village for more than 1 year?

We are looking for Ambassadors for all areas in Residential Living to help new residents get acquainted with Bethany Village by:

**Welcoming New Residents
Be their resource for questions
Tour amenities
AND MORE!**

If you are interested in learning more about the Ambassador program please contact Amanda Price in the Marketing Office at 717-591-8411 or aprice@asbury.org for more information.

Thank you!

An Introduction to Artificial Intelligence

Fred Baldwin

I am a member of the Bethany Village Ecology Team. I'm also interested in artificial intelligence (AI). After the public launch of ChatGPT, a machine-learning algorithm that can generate readable text on demand, I asked it for an article for The Scoop.

Here is the query I created:

Write a short essay (250-300 words) on importance of recycling paper boxes, metal cans and glass bottles at Bethany Village, a retirement community. Some residents live in apartment buildings with designated rooms along hallways for recycling bins for glass, metal, cardboard and printed paper. They must drop kitchen wastes and other garbage down chutes to separate bins. Residents who live in single-family cottages may decide what to recycle, including compost or send it to the trash. Recycling offers residents no direct cost savings, so motivation must be long-term concern for environment, children and grandchildren, etc. Tone should be light, not preachy. Humor desirable, but avoid age-ist stereotypes.

ChatGPT paused for a few seconds to clear the cobwebs from its electronic synapses. In just under a minute, it produced the following text.

At Bethany Village, our community of retirees may not have much direct benefit from recycling, but we all have a stake in preserving the planet for future generations. Recycling paper boxes, metal cans, and glass bottles is one small but important way that we can contribute to a sustainable future.

Some of us live in apartment buildings with designated rooms for recycling bins. It's easy to separate glass, metal, cardboard, and paper and drop them off in the designated bins. And for those of us who live in single-family cottages, we can use our own individual bins for newsprint, boxes, jars, and cans. It may take a bit of effort to sort and carry out the recycling, but it's worth it. *[FB: Correction to generated text. There are separate bins for trash and for recyclables – but not separate bins for glass, paper, metal, etc.]*

Recycling has a positive impact on the environment. By reducing the amount of waste that ends up in landfills, we can help to conserve resources, reduce pollution, and reduce greenhouse gas emissions. It's not just about us, but our children and grandchildren who will inherit this planet from us. We owe it to them to do our part in reducing our carbon footprint.

While recycling may not offer direct cost savings, it's a long-term investment in the health of the planet. We may not see the benefits immediately, but it's the right thing to do. Plus, we can all feel good about doing our part to help the environment.

So let's all take a moment to pause and think about how we can make a difference. Let's recycle those paper boxes, metal cans, and glass bottles. Let's do our part to create a more sustainable world for future generations. And who knows, we might even inspire others to do the same.

OK, that's a bit preachy, but I got what I asked for. If I complain to ChatGPT about its little essay, will the algorithm remind me, "Garbage in, garbage out"?

Receive Estate Tax Savings while Leaving a Legacy

Are you looking to leave a legacy at Bethany Village that will impact residents for years to come? If so, consider a charitable bequest. A charitable bequest is a bequest written in a will or trust that directs a gift be made to a qualified exempt charity when you pass away.

Why consider a charitable bequest? A bequest may offer estate tax relief by providing your estate with a charitable deduction for the value of the gift.

Over the years, generous bequest gifts have enriched the lives of Bethany Village residents through the providing of Care Assurance, special programs, and scholarships for associates.

What assets can be used to make a bequest? Any assets, including:

- Cash
- Property
- Retirement plans

There are several options for designating a charitable bequest, including:

- A specific dollar amount or property
- A percentage of the estate
- A residuary – the remainder after all other bequests, administrative costs, and taxes have been met

Already have a will or trust? Consider adding a charitable bequest through a codicil and making an amendment to your existing plan.

For more questions, please contact Jacob Kanagy at 717.591.8019 or jkanagy@asbury.org.

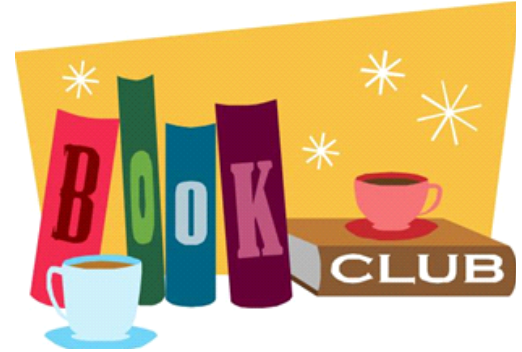
© 2015 Crescendo Interactive, Inc. Used by permission.



The Bethany Readers

Barbara Bankard

Bethany Readers A Women's Book Club



The Bethany Readers welcomes all women of Bethany Village and Bethany Towers to our monthly book discussion.

The group will meet on **Friday, March 10 at 10:00 am** in the **Corporate Conference Room**. Our selection this month is Carnegie's Maid by Marie Benedict. Diane Myers will facilitate the discussion.

Listed below are the dates and books to be discussed. The Bethany Village library has one copy of each book. If you borrow one of these books, be sure to return it as soon as you are finished, so others can borrow it.

To be added to the email list, contact Barb Bankard at bbankard@comcast.net or 410-236-7520.

Hope to see you there!

Date	Book	Facilitator
Friday, March 10 Corporate Conf	Carnegie's Maid by Marie Benedict	Diane Myers
Tuesday, April 11 Rife Center	West with Giraffes by Lynda Rutledge	Margee Kooistra
Friday, May 12 Corporate Conf	The Chancellor: the Remarkable Odyssey of Angela Merkel	Ann Hipp
Tuesday, June 13 Rife Center	Founding Mothers: the Women who Raised our Nation by Cokie Roberts	Ida Mae Heidecker
Friday July 14 Corporate Conf	To Kill a Mockingbird by Harper Lee	Mary Baker
Tuesday, August 8 Rife Center	Horse: a Novel by Geraldine Brooks	Maggie Pepe
Friday, Sept 8 Corporate Conf	The Book Woman's Daughter by Kim Michele Richardson	Melissa Stock
Tuesday, Oct 10 Rife Center	The Blue Orchard by Jackson Taylor	Jane Tracey
Friday, Nov 10 Corporate Conf	Lillian Fishbox takes a Walk by Kathleen Rooney	Micki McCoy
Tuesday, Dec 12 Rife Center	Facilitators for 2024 PARTY	

Additions to the Library March 2023

Connie Scheib

Karen Hawkins “**The Book Charmer**” and “**A Cup of Silver Linings**” are the first 2 books in the Dove Pond series. The Book Charmer is a heartwarming story about the magic of books. Prepare to fall under its spell as Sarah Dove, librarian in Dove Pond, a quaint Southern town which needs rescuing, leads Grace Wheeler, a new resident, to rescue the town despite the fact that she wasn’t interested when she first moved to town. Read how Grace changed her mind with the help of Sarah’s books and did what was necessary to change the town. In the second book, Ava Dove, 6th of the 7 famous Dove sisters, owner of Ava Dove’s Landscaping and Specialty Teas, encounters problems with her special teas when they cause adverse effects on her clients. Meanwhile, successful architect Ellen Foster has arrived in Dove Pond to attend the funeral of her estranged daughter, Julie. Grieving deeply, Ellen is determined to fix up her daughter’s ramshackle house, sell it, and then sweep her sixteen-year-old granddaughter, Kristen, off to a saner, calmer life. But Kristen has other plans. Read this story to find out how the two main characters merge and solve their problems.

Julie Klassen “**The Innkeeper of Ivy Hill**”, first book in the Tales From Ivy Hill series. The lifeblood of the Wiltshire village of Ivy Hill is its coaching inn, The Bell. But when the innkeeper dies suddenly, his genteel wife, Jane Bell, becomes the reluctant owner. Jane has no notion of how to run a business. However, with the town's livelihood at stake and a large loan due, she must find a way to bring new life to the inn. Will she be able to save the Bell and find a new life for herself?

Taylor Jenkins Reid “**The Seven Husbands of Evelyn Hugo**” An entrancing and “wildly addictive journey of a reclusive Hollywood starlet” as she reflects on her relentless rise to the top and the risks she took, the loves she lost, and the long-held secrets the public could never imagine. Aging and reclusive Hollywood movie icon Evelyn Hugo is finally ready to tell the truth about her glamorous and scandalous life. But when she chooses unknown magazine reporter Monique Grant for the job, no one is more astounded than Monique herself. Why her? Why now? You need to find out the answers to these questions!

B.J. Daniels “**Hard Rain**” This is the 4th of 6 in the Montana Hamiltons series. When Brody McTavish sees Harper Hamilton's runaway horse galloping across the pastures, he does what any good cowboy would do—gives chase and rescues her. Unfortunately for him, the woman he's secretly loved for years didn't need saving. But they soon have bigger problems when they make a gruesome discovery—human remains revealed by a recent rainstorm. Remains that will dredge up old Hamilton family mysteries. With her father running for president, every move Harper makes is under scrutiny. But despite the risks, she's determined to uncover the truth about her family's role in a long-ago murder. Will she trust Brody enough to help her reveal the past?

Rachel Kadish “**The Weight of Ink**” Set in London of the 1660s and of the early twenty-first century, The Weight of Ink is the interwoven tale of two women of remarkable intellect: Ester Velasquez, an emigrant from Amsterdam who is permitted to scribe for a blind rabbi, just before the plague hits the city; and Helen Watt, an ailing historian with a love of Jewish history. When Helen is summoned by a former student to view a cache of newly discovered seventeenth-century Jewish documents, she enlists the help of Aaron Levy, an American graduate student as impatient as he is charming, and embarks on one last project: to determine the identity of the documents' scribe, the elusive "Aleph."

Are You Interested in Learning?

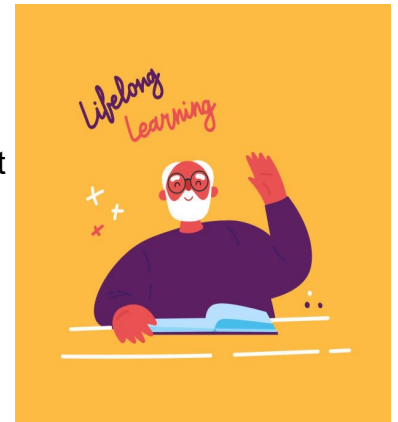
Charley Sproule

The Great Courses offers a catalogue, DVDs, books, and online access to over 600 courses on a wide range of topics. For example, there are courses on science, travel, hobbies, philosophy and religion, music and fine arts, health, travel, literature, history, mathematics, health, fitness, nutrition, and other subject areas. You can learn about what is available by going on-line to www.VisitGreatCourses.com Call 800-832-2412 to request a free catalogue of available courses.

Courses are available via on-line access, or on DVD. Each DVD is accompanied by a book about the course. The courses are taught by "award winning professors and experts." Each course comes with "a lifetime guarantee."

I am interested in many of the courses and have ordered my first course. It is a DVD and book on "The Great Tours: England, Scotland, and Wales." The cost of the DVD, book and mailing for this course was \$47.70. After going through the course, I want to donate it to the Bethany Village library.

Are you interested in helping to build a collection of courses for the Bethany Village Library? If enough residents are interested, our library manager, Ellie Meadowcroft, is willing to set up a library section on the courses. If you are interested in this effort and willing to purchase one course of interest to you, please call Charley Sproule at 717-790-2040 or email Charley at cfsproule@verizon.net The responses received will help determine if Bethany Village builds a library section on the Great Courses.



Celebrate Our BV Nurses

Save the date May 3, 2023

For our Annual Nursing Grant Program luncheon to recognize our 2023 grant recipients.

You do not have to be a nurse to share the day with our outstanding nurse associates.

Look for your invitation in the mail.



**Bethany Village
Nursing Grant Program**

Food for Thought

Dale Meadowcroft

February. Perhaps we should call it Feburrrrr-ary because it's so cold. It truly is the bleak mid winter. The trees are without leaves, if you can see the grass it's brown and crinkly, and although we have passed the winter solstice the days are still short and dark. About the only thing pretty about February is a newly fallen snow.

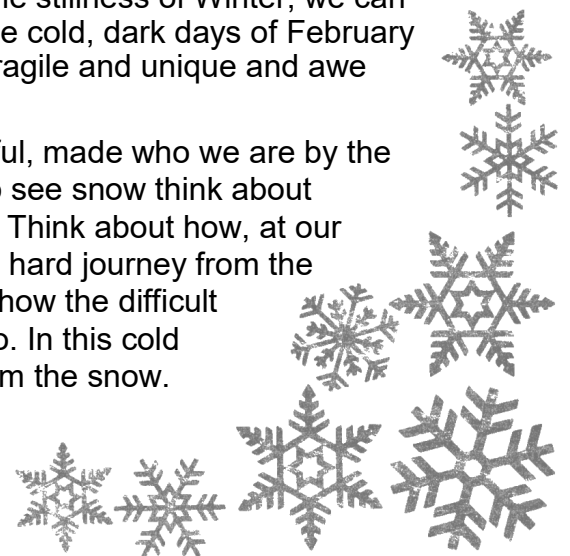
Yet, in the midst of all of the cold and bleakness there is always a ray of sunlight and an opportunity to experience the miracles of life. Let's take another look at that snowfall. I'm sure we have all heard that every snowflake is unique. That's because every snowflake encounters just slightly different temperatures, humidity levels, and atmospheric conditions, all causing just slightly different characteristics of each flake. Isn't that just like us? Depending on our relationships, career choices, and hometowns, we all develop slightly different characteristics, personalities, and values. So often, our immediate reaction to seeing such differences is discomfort. What if we instead felt the same way we feel about the uniqueness of every snowflake when we look at each other?

On the other hand, every snowflake has the same basic characteristics. Whatever their differences, every snowflake is based on a six sided ice crystal. At its basic core every snowflake is the same. Despite those qualities that make us unique, diverse, and extraordinary, at the core, we are all the same. By focusing exclusively on what sets us apart, we most certainly will miss that which ties us together, love. We all need, and can give, love.

All snowflakes begin as tiny microscopic particles. When they fall from a cloud the multiple changes in atmospheric conditions are responsible for making the snowflakes their impressive beauty. As they fall through different temperature zones, melting and freezing, an intricate symmetry forms. Without that trauma from changing conditions, there would be no unique beauty. Days of hardships can make us feel like we, too, are plummeting in a freefall. But as in all aspects of life, it's often those seasons that give us real beauty, too. Memories, sparkling like a star in our mind, can melt just like a snowflake, and yet that same melting snowflake provides moisture and nourishment for the upcoming blossoms of Spring.

So, perhaps February is the most beautiful month of the year. It provides an opportunity to reflect on the gift of being unique and yet similar. In the stillness of Winter, we can focus on what binds us all together, love. During those cold, dark days of February we can rejoice in the miracle of love, for it, too is as fragile and unique and awe inspiring as a snowflake.

We are all like snowflakes, all different and all beautiful, made who we are by the traumas and joys of life. The next time you happen to see snow think about what makes you different, special, and extraordinary. Think about how, at our core, we're all the same. And consider how that long, hard journey from the clouds to Earth made that snowflake what it is – and how the difficult moments in your life have made you who you are, too. In this cold midwinter season, we can all take a lesson or two from the snow.



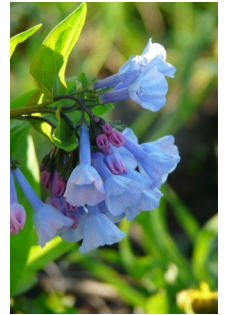
A Garden Walk: March 2023

Anna Johnston

Are you as confused as I am about the weather? I know the early bulbs that often peek through the snow haven't followed our calendars of when to emerge. Margee Kooistra on the East Campus had her buttercup-yellow winter aconite emerge in January! Mine came soon after. I wonder what will happen to the apple orchards in Adams County. This is the month to visit East Campus near the area past the Community Gardens. It's a stretch of grass bordered by trees that haven't leaved-out yet. The bulbs now have direct sunlight. Someone years ago (*I wonder who?*) planted early spring bulbs there. They have multiplied into pools of yellow aconite and snowdrops. It is a place where you can admire the deer and their fawns prancing and leaping, and they don't eat the flowers! George Weigel describes deer as four-legged eating machines. (And if you've ever had your hosta eaten to the ground, you'd agree.) Daffodils have already raised their leaves. Marlin Snider reports that Mary Smith has talked to her bulbs saying, "Calm down." The Oaks Skilled Nursing's exit into the Healing Garden is lined with miniature daffodils' bright-yellow blooms. More daffodils around the campus announce Spring!

Following, are the *ephemerals*. This word always made me think of something floating in the clouds, but it really means "lasting a short time." My favorites are the Virginia bluebells and May apples (Should the May apples need to be renamed for an earlier month?). They have white flowers nestled under umbrella leaves. There are so many "favorites." They bloom and then disappear.

You may want to start a calendar of when plants appear and start to grow, or at least observe them on your Garden Walk.



New Enhancement to the weekly email



We would like to share with you a new feature to Channel 956 developed by Wellness and Resident Life in response to your requests. Beginning the week of March 6th, David Clovsky will read a version of the weekly email that Wellness sends out on Saturdays. This recording will highlight the activities, menus, and special events for the week.

It will also be recorded and replayed on 956 throughout the week for your Convenience. These times will be listed on the Community Wellness Calendar.

Please let Wellness @ (717-591-8368) or Resident Life @ (717-591-8071) know if this helpful and what we should add or delete from the recordings.

Justin Margut

Auxiliary Basket Raffle and Event

April 12, 2023

**Come Join the Fun 2-4 PM Rife Center
Ice Cream Sundaes**

Music by BV Residents

Raffle Tickets on Sale

**Take a chance on the many interesting basket
masterpieces in Rife Center hallway**

Ticket Drawing 4 pm

**Watch for sale of admission tickets \$10.00 and
Basket Raffle Ticket Sales**

Baskets due week of March 7th

Bethany Village Auxiliary

Phyllis Keggereis

Baskets! Baskets! Baskets! Do you have your basket done for the basket raffle? I hope so. If you have any last minute questions call Nancy Toth at 717-991-1821. There will be information coming about the Ice Cream Social that will go with the raffle. The date for this event is Wednesday, April 12 in the Rife Center. This is taking the place of the Fashion Show so mark your calendars now for that date. There will be information coming out in your mailboxes the week of March 6th so read it, don't think it's something to be thrown out. This is our big money maker for this year.

The Gift Shop continues to change with the season. If you enjoy meeting people why not volunteer to give some time working in the Gift Shop. You can socialize and help the Auxiliary. Contact Mary Smith at 1-443-834-3895. She will be happy to help you become a Gift Shop Volunteer.

As always, the monthly Auxiliary Board meeting is open to visitors. We meet the first Wednesday of the month, with the exception of July and August, at 9:30 AM in the East Conference Room. We look forward to seeing you.



Ambulance Membership



Each year we encourage you, as residents of Lower Allen Township, to subscribe to or renew your membership with the Lower Allen Emergency Medical Services. These are the paramedics and ambulance services that are primarily responsible for answering 9-1-1 calls here at Bethany. This subscription is not mandatory, but simply a suggestion that could save you money if you ever need to use these types of services. It is not uncommon to see some of their charges read "not covered by insurance." However, even after you become a member of L.A. EMS, you may still receive a bill from them or another EMS company who

responded to an emergency situation. In each case, it is worth your while to call and inquire about this, as you may not need to pay the whole amount. We have spoken to these companies to help avoid incorrect billing to our residents who are subscribers, but encourage you to contact them directly (or any vendor for that matter) should you ever question a charge.

If you are a current subscriber to LAEMS, you should receive a reminder in the mail soon to renew. Otherwise, we hope to get extra copies of 2023 applications before long. Feel free to contact your social worker if you have further questions about how to subscribe.

Thank You,
John Bowen, Director of Social Services
591-8081

Facilities Department

Director: Mark Ruiz-717-591-8047-MRuiz@Asbury.org

West Cottage Filter Change

West Cottages will have their filters changed this month.

Notice will go out closer to date

Reminder

To contact the Facilities Department, please call 717-591-8074

Birthday Wishes



Listed below are our neighbors who are celebrating birthdays this month. Reach out to them on their special day (and other days, too).

3/3	Fred Baldwin	3/19	Don Lazarchik
	Rosanna Harp	3/20	Peggy Wolbach
	Marijane Lupi	3/21	Carole Gilbert
3/5	Audrey Brown	3/22	Bob Lamb
	Rosann Seidel		Sally Lee
3/6	Dolores Cloyes	3/23	Marie Sersch
	Gerry Grassman	3/24	Frances Mummert
	Gladys Nelson		Marge Crum
3/7	Janet Lerew		Jan Sibbersen
3/8	Nancy Storer	3/25	Evelyn Fennell
3/9	Bobbi Buchter		Patricia Harbold
	Larry Ferenbaugh	3/26	Ed Bitzer
	John Wolfe		Bob Brommer
3/10	Mary Smith		Tommie Davis
3/11	Joan Bretz		Carol Isley
	Bill Lowther	3/27	Leona Fickel
3/12	Marguerite Neiman		Diane Myers
	Ron Savage		Ginny Wilt
3/13	Donald Bennett	3/29	Roxana Burris
	Phyllis Kegerreis		Glenn Delevan
	Frances Landino	3/30	Emily Geshwindt
3/16	Mylesetta Hoffman		John Levine
3/17	Hilda Pierce	3/31	Don Bair
	Vicky Price		Sandy Newmyer
3/18	Shirley Campbell		
	Rose Puchalla		



FURNITURE ROOM OPEN

**Every Thursday, starting Feb 2nd
10 am to Noon
Come in, Browse and Buy.**



WOODWORKING SHOP

**Open every Tuesday
10 am - Noon**

**Doing small repairs on
chairs, tables, lamps etc.
COME - VISIT US!**

Estate Planning - Plan Your Future with People You Know

As estate refers to everything you own, from your home to antique jewelry you want to pass down through your family. Having a trust is a great way to divide your estate among family members and friends. Ensuring that your loved ones receive parts of your estate when something happens to you is something no one wants to think about. That's why our trust services take care of everything – just tell us how you want your estate distributed and forget about it. We'll make sure everything is arranged when the time comes.

Before getting to that point, let's first take a few moments to answer a handful of the most frequently asked questions about estate planning.

Q: What are the three most important documents in your estate plan?

A: The three most important documents in your estate plan are your Living Will, your Durable Power of Attorney and your Last Will and Testament.

Living Will – This document will help guide your named Agent in making end of life healthcare decisions.

Durable Power of Attorney – This document names an Agent to handle your financial affairs in the event of your mental and/or physical incapacity.

Last Will and Testament – This document provides instructions for your named Executor to distribute your estate.

Q: Who can be named as your Agent/Executor in your estate plan?

A: Any competent adult and/or a Corporate Executor, such as a Bank, can be named as your Agent/Executor in your estate plan. It is very important that you designate someone you can trust.

Q: What are the benefits of naming a Corporate Executor in your Last Will and Testament?

A: Naming a Bank as the Executor of your estate relieves the family of having to make important decisions at an emotionally difficult time. A Corporate Executor will act fairly and objectively without bias, which often helps to reduce any family tension. Most importantly, a Corporate Executor is knowledgeable and competent in all areas of estate administration, including estate law, taxes, record-keeping, real estate, and investments. The Peoples Bank Wealth Management team would be a trustworthy partner for you to consider as your Executor.

Visit [Wealth Management in PA and MD | PeoplesBank \(peoplesbank.net\)](https://www.peoplesbank.net/wealth-management) to learn more about how the PeoplesBank Wealth Management team can help you with your estate planning!



VENTURE LECTURE SERIES

Monte Avery

Our opening lecture for the Spring Series begins on March 16, just a few days before the arrival of SPRING

Our first lecturer will be Jean-Paul Benowitz, who will be talking about "Debunking Myths About Pennsylvania Dutch Culture." Pennsylvania, particularly Lancaster County and neighboring communities, hosts the oldest and one of the largest populations of Amish, Mennonites, and Brethren in the nation. In just Lancaster County, annually, 10 million tourists visit the region, employing 22,000 people bringing \$1.8 billion in profit and \$338 million in tax revenues. Similar figures apply to neighboring counties in this region. Whether your family came to Pennsylvania 300 years ago or you just moved here 300 days ago, almost everything you know about Pennsylvania Dutch culture is not true, not true exactly, and has been driven by the tourist industry. Come to this lecture and learn the truth about the Pennsylvania Dutch. Mr. Benowitz was a lecturer for the 2022 series.

Jean-Paul Benowitz is a historian who has been teaching American History at Elizabethtown College (Elizabethtown, Pennsylvania) for 28 years. He is the Director of Special Programs and Prestigious Scholarships and Fellowships. He teaches Honors First Year Seminars as well as Honors courses in leadership development. His Honors research methods courses, cross listed with the History Department's Public Heritage Studies Certificate program, focuses on local history and historic preservation providing Honors students with opportunities for community-based learning and civic engagement. He earned his BS in History at Eastern Mennonite University where he authored his senior thesis on the history of the Old Order Mennonites of Virginia. He earned his MA in History at Millersville University where he wrote his MA thesis on the history of the Old Order Mennonites of Pennsylvania and Virginia. He did his doctoral work at Temple University. His dissertation is a biography of U. S. Congressman James Wadsworth Symington (D-MO) who worked in the Eisenhower, Kennedy, and Johnson administrations. Much of his scholarship, published works, and public presentations have focused on Twentieth Century American political history, particularly presidential studies, and international relations. He has authored books about local history, articles about the Historic Peace Churches and Pennsylvania Dutch culture, and a column in the local newspaper in Elizabethtown about local history.



Thursday, April 20, 2023 – 7 p.m.

Erica Shaffer will address the **“Health of the Environment”**. She will talk about trees and how to keep them healthy, the use and non-use of chemicals in the garden/lawn/landscape, planting for wildlife, and how our health is directly benefited by these types of choices.

Thursday, May 18, 2023 – 7:00 p.m.

Robert Lau will address **“Music 101: An Introduction to Classical Music”**. The lecture will feature a brief history of classical music from the renaissance through the 20th century. Music as related to other arts and tips for listening will be discussed

Bereavement Notifications

Eleanor Parmer 1-31-23

Shirley Adams 2-1-23

Harry Killian 2-12-23

William Schertzer 2-14-23

Jackson Baumbach 2-15-23

Myrna Granville 2-15-23

Junior Snyder 2-18-23

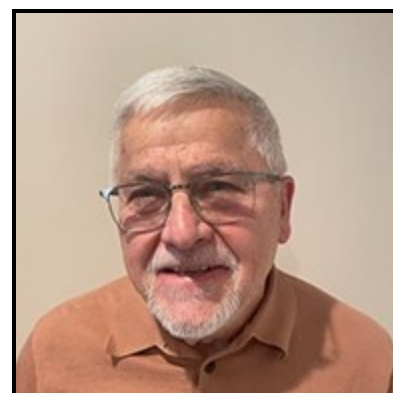


Please Welcome our New Residents to Bethany Village

Amanda Price



Ed and Donna Slaby moved into West Apartment #3145. Their phone numbers are 315-427-9792 for Donna and 315-427-0626 for Ed. Ed and Donna moved from Camp Hill, PA with their French Bulldog named Ryder. Prior to living there they lived in Syracuse, NY for 27 years. Ed is a retired Actuary and Donna is a retired School Secretary. They have three children and two grandchildren.



Bill and Lois Boor moved into West Apartment #2115, their phone number is 717-576-0144. They moved here from Mechanicsburg, PA with their pup Moxie. They are originally from the eastern panhandle of West Virginia, but have lived their adult lives here in Central, PA. They have been married for 61 years! Bill has a master's degree from West Virginia University. His career included, Chairman/Executive Director of the Pennsylvania Board of Parole, Professor at Shippensburg University and retired as Director of Pennsylvania's Children and Youth Programs. He enjoys reading, sports, golf, television, and dining out. Lois is a Registered Nurse having graduated from The John's Hopkins Hospital School of Nursing. She worked in numerous areas of nursing and retired as Supervisor of Medical Assistance Appeals, Commonwealth of PA. Her interests include many crafts including knitting, crocheting and cross stitch. She always has a project in the works for her children, grandchildren or great grandchildren. She looks forward to the opportunities at Bethany, especially the pool!



Jim and Jill Smeltzer moved into East Cottage 412. Their phone number is 717-580-8932. They moved here from State College, PA. Jill is originally from Charleston, SC and Jim from Mechanicsburg, PA. Jill comes from a close family where they sang together in church as children. Her sisters passed in 2015 and she had an idea to unofficially “adopt” friends as sisters later in life, all of whom she still stays in touch with and has found it to be a wonderful idea. She taught school in SC for many years, and enjoyed teaching Math the most. She moved to Harrisburg, PA where she met Jim. Jill enjoys reading, gardening, hiking and volunteering. She would love to find an outlet here at Bethany and volunteer once she is settled and finds one that suits her.



Jim worked for the State Audit General Office, later he started his own accounting firm and then for Seligman Friedman and Company. He passed his CPA the first time he took the examination! He was on the board for Asbury for about 10 years and has enjoyed being active on boards, mostly non-profit. Some of the boards he was associated with include, Harrisburg Symphony, Penn State (raising over 2 billion dollars). Jim was also treasurer and audit chair of the board of Wilson College and a board member for many more organizations.



Nina McElwain moved into Center Apartment 123. Her phone number is 717-766-6624. She moved to Bethany from Mechanicsburg, PA where she lived since 1966. Nina is originally from Saxton, PA. She has 4 children and 3 grandchildren. She drove a school bus for Mechanicsburg School District for 36 years. Nina is a huge Penn State fan!! She is looking forward to meeting new people here.

Frank Rajnik moved into Court Apartment #3327. His phone number is 717-761-3147. He is moved here from Camp Hill, PA. Frank grew up in Wilkes-Barre, Pa and he graduated from Kings College. He worked his whole career at what was known as Ships Parts Control Center (Naval Support Activity Mechanicsburg). Frank has 4 children and 8 grandchildren. He is very active in his faith community with Good Sheppard Roman Catholic Parish and previously volunteered as a Eucharistic Minister at Hershey Medical Center and local Assisted Living Communities. Frank loves all kinds of sports, watching them on T.V. and in person as well as being outdoors and vacationing at North Carolina Outer Banks with family. He looks forward to meeting new people and getting involved at the Wellness Center.





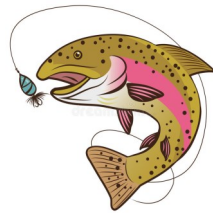
The SCUTTLEBUTT Bulletin Board

SEARCHING FOR...E-BAY USERS!

I have various items which I feel could, and should, be offered on E-Bay. I do not have the ability to make such a thing happen. If any resident or associate is experienced with the process, I am more than willing to share the net profits when the missions have been accomplished. Please call Sandy Henry at (717) 460-5569 to discuss the details!

Trout season is coming. I am not experienced at fishing but would like to learn. Are there any experienced fishermen at BV that would be able to help and be a fishing mentor?

Dick Neff 571-748-8859



Wanted-

an **acoustic guitar player** to play music with a banjo and fiddle in a musical trio. You should be able to accompany bluegrass and old time music on the your instrument. Singing harmony is a plus but not required.

Please call Dick Neff at 571 748 8859 for more details.

A 24-year-old boy seeing out from the train's window shouted, "Dad, look the trees are going behind!"

Dad smiled and a young couple, sitting nearby, looked at the 24-year-old's childish behavior with pity. Suddenly he again exclaimed.

"Dad, look the clouds are running with us!"

The couple couldn't resist and said to the old man, "Why don't you take your son to a good doctor?"

The old man smiled and said, "I did and we are just coming from the hospital. My son was blind from birth. He just got his eyes today."

Every single person on the planet has a story.

Don't judge people before you truly know them.

The truth might surprise you.

THE SCUTTLEBUTT is a community bulletin board for announcements or communicating with our resident community. Included could be want ads, a brief thought to share, or thoughts for a new activity. If you would like your thoughts or ideas to fill this space, send them to dale.meadowcroft@gmail.com

Items of appropriate content, good for our community will be reviewed and published.