

The Scoop

Volume: 13 Issue: VII Date: July, 2023

ASBURY
BETHANY
VILLAGE



Anticipate More

From the Executive Director...

Brian Grundusky



Hello to all residents and associates!! Happy Summer!! I hope that all of you are enjoying your time with your family and friends and please make sure that you are safe through these hot summer days! I want to thank you all again for your continued efforts and patience during these challenging times. The challenges that we are facing continue and you all have been very responsive, and patient and I will continue to ask that you follow all the necessary guidelines that we have in place.

Financial Update: Bethany did not meet the Operating Ratio (OR) for May 2023. The primary reason for this was that we needed to remove a \$2 million unrestricted gift that we received in April. This gift was a designated estate note and not considered a cash gift (OR Guideline). The good news was that we did receive a substantial reimbursement payment from FEMA in May therefore, we still are exceeding our OR goal YTD. We are still having

staffing challenges which created a negative expense variance for the month of **\$112,770 in contract labor**. This figure has decreased over the last three months, and we will continue to do all that we can to ensure we fill these positions.

Staffing: We are still facing several staffing issues at BV. We continue to have shortages

in housekeeping, dining, and clinical areas (SNF C.N.A.s.). Currently, we have several open full-time positions across the community. We are being creative to ensure that we are doing all that we can to attract and retain our staff and do appreciate your ongoing patience and support during these challenging times. We do understand the frustration that is occurring. We will continue to do all that we can to ensure that we are meeting these needs in this area. We recently held an on-site job fair, and I am happy to report that we have had 16 job offers (C.N.A.s, Housekeeping, Dietary Aides and Cooks) with 8 having accepted on the spot.

Occupancy: (as of 6/21/2023): We are currently **94.9%** occupied (compared to a budget of 94.8%). In Residential Living, we

(Continued on page 2)

In This Issue

Additions to the Library	3
PARCR.....	5
Peoples Bank	6
Associate Appreciation Week	7
A Lesson in Cow Judging	8
Residents' Council	9
From the Chaplain	11
Food for Thought	12
Mini-Park Project	13
Art Committee.....	14
Birthdays	15
Railroad Club.....	16
A Garden Walk	16
Asbury Foundation	17
Bethany Readers.....	18
Garden Club	19
Bereavements	19
Welcome New Residents.....	19

Bethany Village
325 Wesley Drive
Mechanicsburg, Pa 17055

(Continued from page 1)

currently have 3 West Apartments and 3 Court Apartments available. We also have 3 Assisted Living rooms and 3 SNF beds available.

2023 Resident Satisfaction Survey: BV has concluded the 2023 Resident Satisfaction Survey. We are in the process of analyzing the results. We did have 67% of our total resident population complete the survey. Initial results show that we did see an 8% decrease (61%) in overall satisfaction in Residential Living (from 2022). We did see a 1% increase in MapleWood Assisted Living (70%) and a 1% decrease in The Oaks Skilled Nursing (78%). The key drivers for this survey were Dining, Safety/Security and Housekeeping. The BV team will be creating action plans based on these results. Brian, Bridget, and Henri will be reviewing the survey results with their residents in July (Residential Living review will be at the July Coffee). Thank you to all of the residents and family members who took the time to provide this feedback. This is extremely important feedback that we will prioritize for future improvement.

BV West Brain Health Project/Initiative: BV will be completing a Brain Health Project on the West side of campus. This project has been initiated and assessed and we are working with a third-party architect (THW) and the Asbury Construction team to develop plans that will enable us to implement a state-of-the-art program which will include brain health systems, enhanced outpatient therapy space, a climbing wall and rock-steady boxing. We have included resident feedback within this process as we want to ensure that the residents are involved. Plans for the project will be shared with resident focus groups this June. Finalized plans will also be shared with the community's Long Term Planning Committee and the total resident population (July Coffee).

Capital Campaign Phase 3: Phase 3 (East campus) which includes implementation of a Salon, renovation of library/gift shop/bank/resident fair area and implementation of satellite fitness center and art gallery (hall) is in full planning mode. We have been working with several resident groups gathering information and feedback over the last several months. We are in the final stages of planning and will be able to review the final plans/drawings with the residents at the end of the summer. We anticipate that this final stage of the capital campaign will be started in early 2024. More to come.



Additions to the Library JULY 2023

Francine Rivers: "The Masterpiece"

A successful LA artist, Roman Velasco appears to have everything he could possibly want—money, women, fame. Only Grace Moore, his reluctant, newly hired personal assistant, knows how little he truly has. The demons of Roman's past seem to echo through the halls of his empty mansion and out across his breathtaking Topanga Canyon view. But Grace doesn't know how her boss secretly wrestles with those demons: by tagging buildings as the Bird, a notorious but unidentified graffiti artist—an alter ego that could destroy his career and land him in prison.

Like Roman, Grace is wrestling with ghosts and secrets of her own. After a disastrous marriage threw her life completely off course, she vowed never to let love steal her dreams again. But as she gets to know the enigmatic man behind the reputation, it's as if the jagged pieces of both of their pasts slowly begin to fit together . . . until something so unexpected happens that it changes the course of their relationship—and both their lives—forever.

"Rivers deftly threads Roman's and Grace's lives together as they tiptoe around their emotional scars, eventually shifting into a dance of tentative steps toward a love neither can resist. Fans of Christian romance will delight in this tale of salvation through love."

Clive Cussler/Mike Madden: "Fire Strike" Juan Cabrillo and the crew of the Oregon must battle an army of genetically engineered mercenaries to stop a hypersonic missile attack in this explosive new adventure in the Oregon Files series. When Cabrillo is hired to extract an undercover operative in Kenya, he finds himself on the trail of a deadly international plot. A Saudi Prince seeks to unleash a deadly assault on U.S. forces, sparking a new war in the Middle East and ultimately destroying Israel.

Cabrillo's crew have met their most fearsome adversaries yet: a force of bio-hacked soldiers endowed with extreme strength and stamina and an unquenchable appetite for violence. The Oregon team must journey from the Amazon rainforest to an abandoned monastery in Eritrea before a final showdown in the mountains of Yemen, using every shred of courage and cunning they can muster to disable the ship-killer missile before the Arabian Sea becomes a mass grave.

Anne George: "Murder on a Girl's Night Out" Patricia Anne -- "Mouse" -- is respectful, respectable, and demure, a perfect example of genteel Southern womanhood. Mary Alice -- "Sister" -- is big, brassy, flamboyant, and bold. Together they have a knack for finding themselves in the center of some of Birmingham's most unfortunate unpleasantness. Country Western is red hot these days, so over impulsive Mary Alice thinks it makes perfect sense to buy the Skoot 'n' Boot bar -- since that's where the many-times-divorced "Sister" and her boyfriend du jour like to hang out anyway. Sensible retired schoolteacher Patricia Anne is inclined to disagree -- especially when they find a strangled and stabbed dead body dangling in the pub's wishing well. The sheriff has some questions for Mouse and her sister, who were the last people, besides the murderer, of course, to see the ill-fated victim alive. And they had better come up with some answers soon -- because a killer with unfinished business has begun sending them some mighty threatening messages...

Danielle Steel: "The Wedding Planner" Faith Ferguson is New York's most in-demand wedding planner, an arbiter of taste for elegant affairs, lavish ceremonies, and exclusive fêtes. She appreciates a simple celebration as much as a dazzling event, for she knows

(Continued on page 4)

(Continued from page 3)

that a dream wedding is not necessarily the most expensive one. As much as Faith enjoys her work, her two failed engagements leave her with no desire to get married herself. She finds fulfillment in her close relationship with her twin sister, Hope, her role as a mentor for her assistant, Violet, and her career. This year, new clients have flocked to her, and she signs up an extravagant reception, a mid-sized gathering, and an intimate soiree, in addition to her mother's next marriage and Violet's modest ceremony. Faith finds herself forming bonds with her new clients and their loved ones—most notably the handsome brother of one of her grooms.

But weddings are not always all champagne and roses, and in no time, Faith is grappling with private quarrels, unplanned pregnancies, family scandals, dark secrets, and the possibility of cancelled ceremonies. Through her own journey, Faith will prove once and for all that there is not just one path to happily ever after.

Elin Hilderbrand: “The Beach Club” A series of personal dramas are played out during one summer at a Nantucket Beach Club. It's about the love of summer, summer love, and the special feelings we all have for that special summer place--in this case, a hotel and an island. Mack Petersen, manager of the hotel, has been working at The Beach Club for 12 summers. Only this summer is different. His boss, the owner of the hotel, Bill Elliot, shows up in the spring with a new set of demands. His girlfriend Maribel is pressing Mack to get married and Vance, the African-American bellman, who has hated Mack since the day Mack stole his job 12 years ago, threatens him in a deadly scene. Mack knows something's got to give. Love O'Donnell, the new front desk person straight from the slopes of Aspen, is desperately searching for a stranger to father her child. The bellman, Jem Crandall, who posed as Mr. November in his college calendar, is on his way to LA to break into agenting, until he falls in love with Maribel. Emotions are at a peak when a hurricane threatens to wash away The Beach Club and all it stands for. Read this novel to see what happens at and to the Beach Club!

Connie Scheib

Next up at PARCR: MEDICARE EDUCATION at Masonic Village

Lowell Starling

The first highlight of the next PARCR's Quarterly Meeting will be Mike Fiaschetti, the President of Medioplanconnect speaking on Medicare Education. The second highlight will be the opportunity to visit Masonic Village in Elizabethtown, PA. Located on 1400 acres of Lancaster County farmland, Masonic Village is an impressive community. See some of the details at <https://masonicvillageelizabethtown.org>.

The meeting will be held at 10:00am on July 12, 2023. Mike will discuss the history of Medicare and the various types of Medicare plans along with some details on the various coverage types available. This information will be just in time for the Medicare Open Enrollment period in the fall. After the meeting, Masonic Village will offer an optional campus tour for those who want to see more about the community.

PARCR's October Quarterly meeting will be at Cross Keys Village in New Oxford. We will have two speakers including our own Division President Todd Andrews on challenges facing the CCRC industry.

You do not have to be a PARCR member to attend the in-person meetings. The invitation letter should be in your BV mailboxes a couple of weeks before the meeting.

As always PARCR individual memberships are \$20 a year and you can find the registration materials at PARCR.ORG. For the \$20 you get access to all the legislative and regulatory information published by PARCR in conjunction with LeadingAge PA, and the PARCR Post newsletter. You also get front row seating at the Quarterly Meetings.

Official Websites:

PARCR – PARCR.ORG

(Pennsylvania Alliance of Retirement Community Residents)

LeadingAge PA – leadingagepa.org

NaCCRA – naccra.com (National Continuing Care Residents Association)



Pennsylvania Alliance of
Retirement Community Residents

Economic and Market Perspectives

By The Numbers



2.7%

Global economic growth is projected to slow to 2.7% in 2023, reflecting ongoing drags from more restrictive monetary policy and tighter credit conditions. This would be the slowest annual growth rate other than 2020 in over 10 years.



10

The U.S. Federal Reserve had hiked **interest rates** 10 consecutive times, but paused at their most recent meeting in June. The Fed has indicated they may raise rates up to two more times before the end of 2023.



1.6%

The **U.S. economy** is expected to grow only 1.6% in 2023 according to the OECD. Consumer spending is expected to moderate amid tighter financial conditions and as consumers deplete their excess savings that were generated in the past several years.



102.3

The Conference Board **Consumer Confidence** Index fell 1.4 points in May as consumers' view regarding the current conditions for the U.S. economy fell and their future expectations remained gloomy. Consumer confidence remains well below levels seen in 2021 and parts of 2022.



3.7%

Unemployment rate in the United States rose slightly to 3.7% from a low of 3.4% in April. The tight labor market has driven wages up as companies compete for workers.



1%

Analysts are projecting **corporate earnings growth** of only 1% in 2023 for the S&P 500. Corporate earnings are expected to decline in the first two quarters of 2023 before recovering slightly in the second half of the year.



4%

The **year over year rate of inflation** as measured by the Consumer Price Index (CPI) slowed to 4% from 4.9%, marking the lowest level since March 2021.



86%

The **10 biggest companies** are responsible for approximately 86% of the year-to-date gain by the S&P 500. The S&P 500 is up over 15% through June 16th, 2023.



3

Core inflation has posted the same month over month increase in prices for three straight months. Core Inflation omits volatile categories like food and energy prices and has remained fairly elevated at 5.3%.

Sources: The Organisation for Economic Co-Operation and Development (OECD), the Federal Reserve Board, U.S. Bureau of Labor Statistics, the Federal Reserve Bank of New York, Morningstar, Macrobond, and S&P Global, FactSet

Deposit and loan products are offered by PeoplesBank, Member FDIC and Equal Housing Lender. Investment Services, including 401k plans, are Not FDIC Insured, Not Guaranteed and May Lose Value. Contact us for details.

peoplesbanknet.com | f t y i in

Associate Appreciation Week

During the week of June 19-23, Bethany Village Staff and Residents' Council came together to honor our outstanding associates. Every day was "special" in its own way.



Monday
Layered Dress-up and ice cream treats

Tuesday Cookout Martha's Garden



Wednesday Root Beer/Ice Cream Floats
Hawaii Shirt Day

Thursday Photo Booth/T-shirt handout



Thank You

All My Eggs in One Basket – A Lesson in Cow Judging

Ann M. Van Dyke

Both my grandparents and my parents raised chickens so I grew up knowing the literal wisdom of not putting all your eggs in one basket, and by the time I was 12, I knew the metaphorical meaning as well. Nonetheless, I violated both meanings regularly.

In the summer of 1960, the county dairy farmers association did something previously unheard of. They asked farmers to put Holsteins and Guernseys in one barn. But only for one day, mind you, for a cow judging contest. Breed names were way too formal for old farmers, by the way. They just called them black cows and brown cows. Raising black cows vs. brown cows was a little like being a John Deere guy vs a Harvester guy. You were either one or the other.

So black and brown bulls and milk producing cows and heifers (young virgin girl cows, for you city folk) came in from all over the county and were lined up for judging in a nearby barn. Our neighbor, Art had gone into every corner with a pin to ready it. Cleanest barn I've ever seen.

Anyway, people were grouped into judging categories by age putting my friend, M.J. and me in the 12 to 17 age group. To my dismay, that put us in the same group as brothers Kyle (17) and Larry (15) who were not only much older than we were but they had been doing dairy farming with their parents for years. Plus, there was the problem that I had a crush on Larry. Now, I had been schooled by Annie Oakley's song, "You Can't Get a Man With a Gun," to know that one must never do anything better than the man you crushed on if you were to "get" him. My chances were slim to none with Larry, but I hoped he might talk to me one day and that was NEVER going to happen if I bested him in his own game. Note the 12-year-old emphasis here.

In addition to the crush, there was the other problem that though I knew many cows on a first name basis, I did not know about cows. And M.J. was NO help as she was a city girl from New Jersey visiting her grandparents. But with all that against us, we did want to at least look like we were taking seriously the task of choosing the best milk producers. We suspected that using a couple different criteria would be wise. You know, put several eggs in several different baskets...but we had no cow judging criteria to choose from.

So we decided to rank the cows based on the length of their eye lashes. And we won... with all our eggs in a basket made of eye lashes. Kyle and Larry were stunned. We were stunned.

The prize was a Bradford County Dairy Farmers' Association t-shirt, which we both really wanted. And the honor of being interviewed on local radio about our cow judging strategy. M.J. disappeared in a puff of smoke and left me to face the mic alone. Fortunately, I was raised by a long list of farmers and Methodist ministers who are all good at telling stories, so at an early age I learned how to talk to anyone about anything, anytime, anywhere...and not necessarily answer the question. (I would call on that skill later in life when I took a government job.)

Although Kyle and Larry went on to become very successful dairy farmers, I suspect they are still unaware of the causal relationship between eye lash length and milk production.

Ann M. Van Dyke grew up in serious farming country in northern Pennsylvania and spent 32 years as a civil rights investigator for the PA state government where she often called on her gift of gab, but only to tell the truth.

Your Residents' Council

COMMITTEES:

1) The **Art Committee** accepts, approves, and maintains all paintings and objects of art, which are donated to Bethany Village by residents. The Committee may also accept loans of art and present exhibitions by local artists. The aim is to enhance the attractiveness of public areas on the Campus and to encourage interest in the visual arts for the entire Bethany Village community.

2) The **Associates Appreciation Fund** Committee supervises the collection and distribution of all Gift Funds contributed by Residents for the benefit of the Bethany Village Associates identified by the Human Resources Department

3)The **Audio-Visual Committee** provides knowledgeable assistance to entities within Bethany Village who use audio-visual equipment to support and enhance their activities and programming. The Committee will monitor existing audio-visual equipment for functionality and report to Facilities Management when repairs are required. The Committee makes recommendations to the proper authorities regarding new equipment and adjustment of existing policies affecting audio-visual operations.

4)The **Benevolence Fund Committee** collects offerings at the Bethany Village Vesper Service and special Worship Services, deposits all such funds in the Residents' Council Account earmarked "Vespers", forwards the deposit slip to the treasurer, and recommends distribution of funds to the RC at the end of the year.

5)The **Bethany Village Fair Committee** is responsible for the organization, leadership, promotion, and management of the Bi-Annual Bethany Village Fair.

6)The **Dining Services Committee** is responsible for receiving and investigating comments, suggestions, compliments, and complaints from residents who patronize Bethany Village food services, and then works with Dining Service to best serve our community.

7)The **Facilities Committee** ensures that the landscaping and maintenance needs of Bethany Village are met and will enhance the beauty of our community. It has an on-going dialog with the Facilities Department on matters related to landscaping and maintenance.

8)The **Library Committee** supports the Librarian in making decisions regarding the purchase of new books and equipment; engaging volunteers; scheduling Library hours and other Library issues as they arise.

9) The **Pennsylvania Alliance of Retirement Community Residents (PARCR)** is open to all Bethany Village residents interested in learning more about issues facing senior living, legislative and regulatory actions impacting seniors. The Committee focuses on how to build awareness about PARCR and its activities and increasing resident participation. This involves distribution of PARCR materials, serving as ambassadors for PARCR to residents, and attending quarterly PARCR meetings.

10) The **Program Committee** confers with the Resident Life Program Coordinator of Bethany Village to recommend, promote, and support entertainment and educational



(Continued on page 10)

(Continued from page 9)

programs on and off campus.

11) The **Spiritual Living Enrichment Committee** serves as advisors to the Chaplain for Sunday Evening Vespers, other pastoral services and considers religious activities not under the direction of the Chaplain.

12) The **Wellness Committee** helps to determine what would best serve the needs of Bethany Village residents by providing programs that focus on areas of wellness including physical, spiritual, intellectual, social, emotional, and vocational.

ACTIVITIES:

1) **Campus Outreach** updates the photo albums of independent living residents on both East and West. One coordinator obtains the vacancy information from the Marketing department and the occupancy information from the Billing department to present to RC during the monthly meetings.

2) The **Courtesy Committee** sends cards or notes to Residents who are hospitalized and to their spouses in case of death. Notes of appreciation may be sent on appropriate occasions, or as recommended by the Council.

3) The **Information Technology (IT) Committee** consists of a chairperson and up to four members, all of whom have knowledge of Information Systems and its potential to enhance the lifestyle of BV residents. The Committee will network with the responsible organization for providing Information Technology to the BV campus, seeking to improve and support the flow of information to and from the resident community using computers and the internet.

4) The **Remembrance Garden Committee** acknowledges requests for memorial bricks and manages the ordering and installation of new bricks.

6) The **Woodshop** participants work on projects of personal interest. Participants aid with repairs and other projects as requested by Bethany Village residents and Residents' Council committees. It is available to all Bethany Village residents, who have been properly trained on the existing equipment.

CLUBS:

1) The **Model Railroad Club** exists to promote and support the interests of Bethany Village residents, associates, and their friends and family in building and operating model railroad layouts. It provides entertainment and education about railroads for residents of Bethany Village, their friends, and guests. Work sessions are held as needed to build and maintain model train layouts. Open houses for residents, friends, and guests to watch the trains run are held during the winter for the indoor layouts and during the summer for the outdoor garden train.

2) The **Garden Club** consists of all residents participating in the Bethany Garden. Participation is voluntary and everyone follows the provided guidelines. Gardening equipment is available to borrow. Excess produce is welcomed by Bethany Village residents in the East Breezeway and by the West Mailbox area for a contribution.

From the Chaplain

Brand Eaton

When I was a boy, we lived in a house along a stream. A mile away, on the other side of a wooded ridge, the train tracks passed along the Juniata River. They crossed over a roadway somewhere on that stretch, which would necessitate the locomotives sounding their horns when they approached the crossing.

In the summer, I would lie in bed at night and listen to the croaking of the bullfrogs in the stream. I would hear the faint click-clack, click-clack of the rolling railroad cars and the low-toned blowing of the horn on the diesel locomotives a mile away. The trains would drown out the croaking of the bullfrogs for a bit, but the sound of their nocturnal bellowing would return after the trains passed.

The bullfrogs lived their entire lives in a small section of the stream running by my house. From life as a tadpole onward they remained established in a small area. They were a symbol of stability and home for me, so that even now whenever I hear a bullfrog I am taken back to the bedroom I inhabited as an eight-year-old. But I remember, too, the trains. They rumbled through our valley from somewhere else to someplace else.

We are a paradoxical people, in love with home and yet with hearts that yearn to wander. Some of our ancestors came to this land as wanderers in search of something. Others were brought here against their wills, taken away from home for ever. And that spirit that wanders and yet longs for home is still with us.

Wandering can be an aimless pursuit that simply moves us from place to place without a goal. But it can also be a purposeful sojourning, with appreciation for those experiences along the way that speak of a final place of rest and settlement, with anticipation of reaching a destination of peace, wholeness and fulfillment. In my journey, my heart becomes restless with the sound of trains—and my eyes grow misty when I hear the nocturnal song of bullfrogs.



What is Icon?

Icon is a website designed for residents and families where you can find centralized information about Bethany Village, and where you can easily request maintenance work, make dinner reservations, search for a phone number, access the events calendar, and so much more. Besides being accessible from any computer or tablet browser, the information in Icon can also be accessed through a cell phone app, or through touch-screen digital signs around campus (coming soon). Furthermore, Icon's calendar events and announcements will display throughout the day on TV Channel 956.



Food for Thought

Dale Meadowcroft

The night sky is magical. The dark curtain sprinkled with tiny dots of light has inspired songs, sparked romances, and prompted humans through the ages to gaze at the twinkling scene overhead and wonder what's out there and what it all means.

July is a great time to ask that question. I fondly remember long walks through the woods to a meadow where I would lay on my back and stare into the galaxies overhead. My mind would escape the earthly bounds and soar into the vast wilderness known as space. Looking back 50 or 60 years, we have learned so much about the vastness of the universe.

Even after more than four decades of historic exploration, the JPL-managed twin Voyager spacecraft still talk to Earth every day, using a tiny amount of power, comparable to a refrigerator light bulb. After a long and historic period of exploring the four giant planets in our solar system, the Voyagers became the first probes ever to reach interstellar space. In that vast, previously unexplored region, the probes are tasting space outside the protective bubble of particles and magnetic fields created by our Sun.

Our universe includes a variety of astonishing and sometimes bizarre objects. Massive black holes so powerful, they swallow nearby objects. Galaxies that merge into giant swirls. Enormous stars that eventually explode and become supernovas. Neutron stars — objects so dense, one tablespoon of their material would weigh about 1 billion tons on Earth.

I often wonder if what we are doing on Earth has a purpose? If all of our battles, conflicts and accomplishments count for something? I am but one person amongst billions on this planet which is but one planet amongst potentially billions of others. How can that make me special?

It is then that I remember a lady I met over 30 years ago. When asked, "How are you?", she always responded, "I am highly favored and richly blessed." An elderly widow, with a socially challenged son, she was not healthy or wealthy. But she was full of a peace so wonderful that it cannot be compared to any other type of peace; a peace that stands in a category by itself and rises far above and goes beyond anything the human mind could ever think, reason, imagine, or produce by itself. A peace that stands at the entrance of your heart and mind, working like a guard to control, monitor, and screen everything that tries to access your mind, heart, and emotions.

Tonight, take time to gaze into the night sky . Where we live it may just be dark without the billions of stars we remember from childhood days. But you know, whether you see billions of stars or not, how vast the universe is; how insignificant you may feel. Take a moment. Ponder. Wonder. And fully appreciate that you do matter.

You are highly favored and richly blessed.



Mini-Park Project

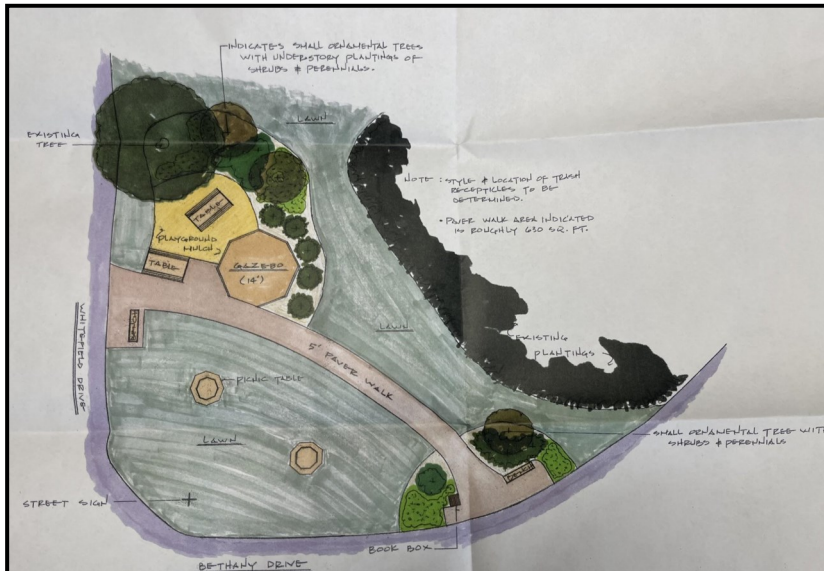
Currently, at the corner of South Bethany Drive and Whitefield Drive on the East campus, there is a barren plot of grass, adjacent to the fenced in sinkhole. At one time, there were trees along Whitefield Drive, which were removed several years ago

A small group of residents, working with the Ecology Team, saw an opportunity to develop a natural woodland space to encourage residents to spend time relaxing and enjoying the outdoors.

As Brian Grundusky, Executive Director stated, “Spending time in outdoor environments benefits us in three main ways as we age: increased participation in physical activity, better mental health and function, and increased social connection with others. Let’s ensure we have beautiful spaces to enjoy the outdoors at Bethany Village.”

In April, a general resident meeting was held to present an initial proposal. After that meeting, additional feedback was received from residents. Changes were made to the initial proposal, and presented to a smaller group of residents.

Based on that input, the committee is moving forward to develop this small area into a mini-park to be enjoyed by all residents. The project has the support of Bethany Village administration.



A concept drawing shows the vision for this project. Much like the Healing Garden by The Oaks, it will in time become a place where individuals and small groups can enjoy the natural environment. (Note: drawing is not to scale, and positioning of tables, etc. may change)

The project will be done in phases as funds are raised. Soon, you can expect to see a new park bench, accessible picnic tables and flowers. Plans include a small 14'x14' gazebo, with seating inside. In

addition, native shrubs, small trees and flowers will be planted. A butterfly garden will also be created.

Because this project is resident funded, there are multiple ways you can support it. Some of these are listed below. Contact Jacob Kanagy in the Foundation Office to financially support this plan. Currently, almost \$9000 has been raised.

(Continued on page 14)

(Continued from page 13)

Naming opportunities include: naming the park, memorializing a park bench or picnic table, memorial pavers, adopting the butterfly garden, planting memorial trees, and veterans remembrances.



As the mini-park project proceeds, regular updates will be in The Scoop. Feel free to contact any committee member to see a larger drawing, to ask questions, or to make suggestions.

Barb Bankard, Joyce Kieffer, Margee Kooistra, Carol Steffy, Anne Stevenson, Jacob Kanagy.

Do you have paintings that are in storage, and, frankly, you don't know what to do with them and you don't have space to hang them? Do you want to get rid of old paintings you're tired of? If you do, please consider donating them to the Residents' Council Art Committee (East and West).

The Art Committee relies upon the generosity of BV residents for the majority of our paintings; we have continuing requirements for paintings. For instance, we have hung paintings in skilled nursing, memory support, the clinic, the beauty salon, West apartments, East Court apartments, Center apartments and the Computer Lab. In many of these areas, we rotate the paintings, periodically. Walk around and see them!

All donations are permanent and become the property of BV. We can't take paintings on a temporary basis because of liability issues.

If you have any questions, please call on any members of the Art Committee:

East Art Group: Marcia Marsh, Kay Hess, June Kostrab, Susan Stiller and Carol Pennington

West Art Group: Tom Fabian, Marcia Conner, Jean Voss, Paul Voss, Joe McLaughlin, Kay Kush, and Ray Saunders

Marcia Marsh, Chairman



BETHANY VILLAGE JULY BIRTHDAYS

7/1 Donald Baltosser	7/16 Scott Kehs
7/4 Marilyn Keener	Penny Williams
Pat Pursell	7/18 Frank Konchar
7/5 Florence Bennett	7/19 Myron Roher
Frank Craig	7/21 Paulita Gilmore-Lee
Richard Papiernik	Coral Norton
Ginny Schrecengost	Charlotte Perrego
7/6 Faye Chorpenning	7/22 Jean George
Bob Hetherington	Alice Park
7/7 Bernie Kunz	7/23 Mary Czachur
Nancy Rohrbaugh	Tom Fabian
7/9 Marion Russell	7/24 Lee Stover
7/10 Susan Baldwin	Tom Usiadek
7/11 Jeanne Zody	7/25 John Diener
7/12 Mary Loring	Howell Sasser
Deb Mihalich	Kathryn Wiley
7/13 Ernest Buckley	Eleanor Young
Lisa DeVries	7/26 Virginia Noble
George Greider	Mike Tracey
Twila Perry	7/27 Mary Ann Henson
Bill Toth	Pat Huth
7/14 Nadine Creighton	7/29 Norma Brandon
7/15 Tom Cognato	Patricia Wonders
	7/30 Carl Nuttll

Come See the Garden Train!



Just a reminder that the Garden Trains located in Martha's Garden between The Oaks and MapleWood are scheduled to run Wednesdays and Saturdays from 10:30 to 11:30am, weather permitting, until the end of September. If you haven't enjoyed watching the trains run and reminiscing about the venues and eras represented in the layout, what are you waiting for?

If you have any interest in joining us in being a blessing to the residents of Bethany Village, we can use all

kinds of skills to build, operate, and host the operations of our trains. Contact Membership Director Nancy Thomas (717- 591- 5497) President Tony Wright (717 307-1718) or Vice President Jim Wilt (717 648-5175) for information. You can also see more details on our web site: <https://bvmrrc.bvrescoun.org/>



A Garden Walk: July

Anna Johnston

June was "Bustin" and July starts with the "Bang" of July 4th. Marilyn Keener, who chairs the Healing Garden, points out that bulbs and then perennials are the first blooms in our gardens until July. Then the annuals tend to take over. Residents that nursed their seedlings or hovered over possible new plants in nurseries are starting to see results. And those who are willing to deadhead their roses and come-again daylilies have repeat blooms. It's now a wonderful mixture of perennials and annuals.

You MUST visit the Healing Garden this year! It's on the West Campus at The Oaks (Skilled Nursing). With more cool days, the perennials have flourished and prolonged their stay. As you enter, purple clematis climb a post. Shasta daisies, and yellow loosestrife (from Margee Kooistra) welcome visitors. There is so much more as other plants emerge.

As you go on your walk, notice the blooms on the hosta and the Knockout Roses. Cindy Lindsay sent me a photo of her blooming Milkweed plants that are essential to the lives of our Monarch Butterflies. Our Cottage gardens, apartment balconies with flowers joyful in pots, the Community Garden, and plantings in our public areas are brightening our days.

Exercise, Observe and Enjoy your Garden Walk.



Support Bethany Village through your IRA

Did you know you can reduce your taxes by redirecting unneeded IRA income to charity? An IRA rollover gift is a simple and easy way for you to use your IRA to help your Bethany Village community.



What is an IRA Rollover Gift?

If you are 70 ½ or older, you can make a charitable gift of up to \$100,000 from your IRA annually. This gift will qualify for your required minimum distribution, and you would not have to pay federal income tax on the amount given from your IRA directly to charity.

Why an IRA Rollover Gift Makes Sense

When transferring some of your required minimum distribution from your IRA to Asbury Foundation, you may lower your taxable income as well as reduce your income and capital gains taxes this year.

How an IRA Rollover Gift could benefit Bethany Village

An IRA Rollover Gift could be designated for:

- Care Assurance
- Capital Project
- Special Program
- Associate Education
- Innovation

For more information on supporting Bethany Village through your IRA, please contact Jacob Kanagy, Director of Development at 717.591.8019 or jkanagy@asbury.org.

The Bethany Readers

Barbara Bankard

Bethany Readers A Women's Book Club



The Bethany Readers welcomes all women of Bethany Village and Bethany Towers to our monthly book discussion.

The group will meet on **Friday, July 14 at 10:00** am in the **Corporate Conference Room**. Our selection this month is *Founding Mothers: the Women who Raised our Nation* by Cokie Roberts, led by Ida Mae Heidecker. (Note change)

Listed below are the dates and books to be discussed for the remainder of 2023. The Bethany Village library has one copy of each book. If you borrow one of these books, be sure to return it as soon as you are finished, so others can borrow it.

Please begin to send suggestions for 2024 to Barb Bankard. There are a lot of good books out there!

To be added to the email list, contact Barb Bankard at bbankard@comcast.net or 410-236-7520.

Hope to see you there!

***Please note- dates and rooms are subject to change. ***

Date	Book	Facilitator
Friday July 14 Corporate Conf	Founding Mothers: the Women who Raised our Nation by Cokie Roberts	Ida Mae Heidecker
Tuesday, August 8 Rife Center	Horse: a Novel by Geraldine Brooks	Maggie Pepe
Friday, Sept 8 Corporate Conf	The Book Woman's Daughter by Kim Michele Richardson	Melissa Stock
Tuesday, Oct 10 Rife Center	The Blue Orchard by Jackson Taylor	Jane Tracey
Friday, Nov 10 Corporate Conf	Lillian Fishbox takes a Walk by Kathleen Rooney	Micki McCoy
Tuesday, Dec 12 Rife Center	Facilitators for 2024 PARTY	

Bethany Garden Club

Cindy Rogers Lindsay

What a beautiful garden we have at Bethany. Just today as I was working in the garden planting corn, Pat Ambrose and her family walked thru the garden to enjoy viewing everyone's hard work. They stopped to tell me that they were very impressed with what they saw. It made me proud of our club.

We have so much growing now with a lot more to come. Although weeds are a big problem for all of us in the garden, we battle thru. It isn't always easy work, but it is rewarding and research has proved it is great for us seniors.

Come walk thru the garden anytime. Just be sure to keep all gates shut. Our animal friends are always looking for a way in to enjoy the goodies.



Bereavement Notifications

Mary Koller 5-26-23

Eleanor Bailey 6-8-23

Mildred Spangler 6-1-23

Glenn Crum 6-8-23

Glen Zimmerman 6-6-23

Ruth Tait 6-10-23

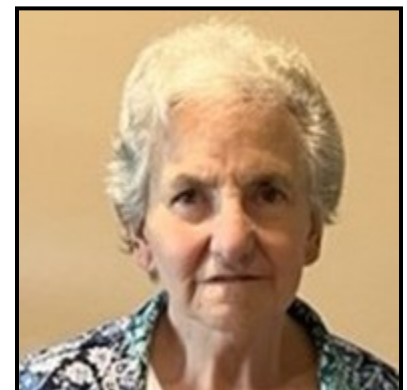
Richard Wolford 6-6-23



Please Welcome our New Residents to Bethany Village

Amanda Price

Jane Titzell has moved into Center Apartment 108. Her phone number is 803-646-2019. Jane moved here from Camp Hill, PA. She is looking forward to meeting people here at Bethany and socializing more.





Philip and Suzanne Taylor have moved into East Cottage 501. Their phone number is 717-497-7009. They have moved here from Etters, Pa. Philip was an accountant and Suzanne a Preschool Teacher. Philip enjoys hunting, fishing, volunteering at church where he is admin of the board as well as treasurer and coordinator of the Easter Egg making project. He was in the US Army Reserve. Suzanne enjoys reading, time with family, cooking/baking and knitting. She has been the children's choir director for

almost 25 years and director of Salem Nursery School. You can also find her doing crosswords puzzles, word games and most recently enjoying coffee on the front porch to her new cottage!



Robert Regan moved into West Apartment #2103 and his phone number is 717-591-1041. Robert moved here from Mechanicsburg, Pa. He was born and raised in Scranton, Pa in a family of 8 children. His Dad was a funeral director. Robert went to Scranton High School and also the University of Scranton. He served in the army from 1935-1955 and spent 19 months in Japan. Robert worked for the Navy here in Mechanicsburg for 33 years. He has had a long association with the credit union community. Robert was a member of the Board of Directors of the Members 1st Federal Credit Union for 17 years and Chairman of the board for 14 consecutive years. He was also chairman of the board of the National Association

of Credit Union Chairmen.



Coral Norton and Carl Nuttall have moved into West Apartment 3102. Their phone number is 717-591-8627. They moved here from New Cumberland, PA. When Coral was a teenager she traveled from South Africa to Philadelphia on a boat that took her 17 days and she did it by herself! Carl's whole family was in the construction business and he owned his own business of installing equipment in

laboratories. Coral loves to read. They are looking forward to getting settled and seeing all that Bethany has to offer.

